



The preferred manufacturer  
of bespoke products and  
building systems for the  
**Light Steel Frame  
Construction Industry.**

# BENEFITS OF STEEL

## **Quality**

- International Product of World Class Standards
- Factory Precision
- Consistent Material Quality – No Regional Variations
- Produced in Strict Accordance with SANS 517
- Straight Walls

## **Cost-Effective**

- Material Price Stability
- Limited Wastage – only 2% On-Site Wastage compared to conventional building methods.
- Lower Transport Cost

## **Strength**

- Highest Strength-to-Weight Ratio of Building Materials

## **Green**

- Environmentally Friendly
- Green Product / Building Methods & Processes
- 100% Recyclable
- Most Recyclable Product on the Planet – 68% Industry Recycling Rate

## **Non-Organic**

- Inorganic – Will not Rot, Swell, Split, Crack or Creep
- Invulnerable to Termites, Fungi, Mould and other Organisms
- Incombustible – Does Not Burn & Does Not Contribute Fuel to Spread fires
- Free of Resin Adhesives & Other Chemicals
- Ventilation on Moisture Rising
- Superior Thermal & Acoustic Insulation.
- Construction Material not Affected by Weather Conditions

## **Construction**

- Superior Building Accuracy
- Quick Assembly – 50% Faster than Brick Building
- Shorter & Predictable Construction Schedules
- Easier Plumbing & Electrical Installation
- Better Utilisation of Sloping Sites
- Less Weight Impact
- Clean, Safe & Tidy Building Site

## **Architecture**

- Flexible Application – Any Shape & Design
- Architecturally Attractive
- Designed to Architect Specifications & Engineering Standards
- Reduced Foundation Footings & Base Plate Sizes
- Reduced Foundation Requirements – Lighter Structure
- Less Probability of Weather / Wind / Earthquake Damage

## **Customer**

- Earlier Occupation for Customers
- Earning Additional Rental Income
- Reduced Interest Period on Bond Accounts
- 4% More Lettable Rental Area – Internal Space Increase
- Up to 40% Saving on Electricity due to Superior Insulation
- In excess of two hour fire walls can be constructed using this method





## OUR VISION

To be the leading supplier of Light Steel Frame Structures on the African Continent.

## OUR MISSION

To provide our clients with innovative solutions to their building structures thereby offering them opportunities to favorably compete with other products in their specific markets. To achieve this mission we endeavor to further expand our design capabilities and production methodologies.

## OUR PHILOSOPHY

### **Ethics:**

Our relationships with our customers will be conducted with integrity and honesty.

### **Quality:**

We will NOT compromise on the quality of product to achieve profitability.

### **Culture:**

We actively build a diverse, inclusive and collaborative work environment where all views are welcomed, openness is encouraged and teamwork is the cornerstone of our working relationships.

### **Relationships:**

We strive to build mutually beneficial relationships with our clients, suppliers and work-force.

### **Innovation:**

We utilize the innovative technologies that are used globally to provide our clients with the latest alternatives to the conventional building methods for this specific market.

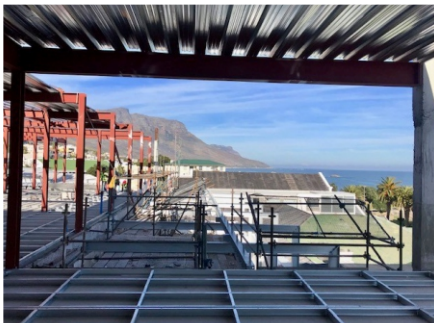
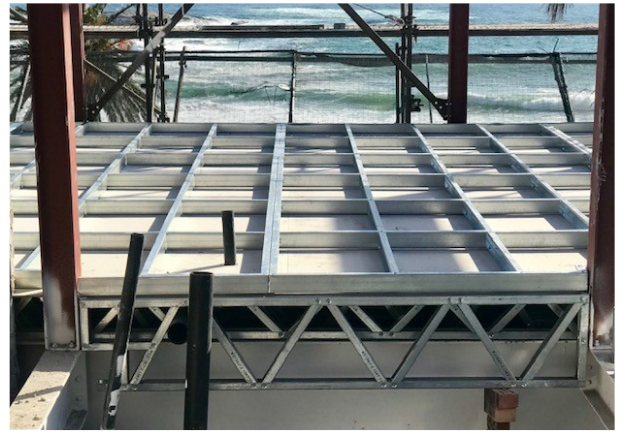
## OUR TECHNOLOGY

We only utilise state-of-the-art technology to plan, design, manufacture and assemble Light Steel Frame structures. This advanced design-and-build system ensures the most efficient and time saving construction cycle possible. As a result, our planning is detailed and our calculations are precise, thus ensuring minimal waste for our clients. With the highly advanced Framemaster software we provide our clients with a realistic representation of the structural planning and this allows for a streamlined design approval process.



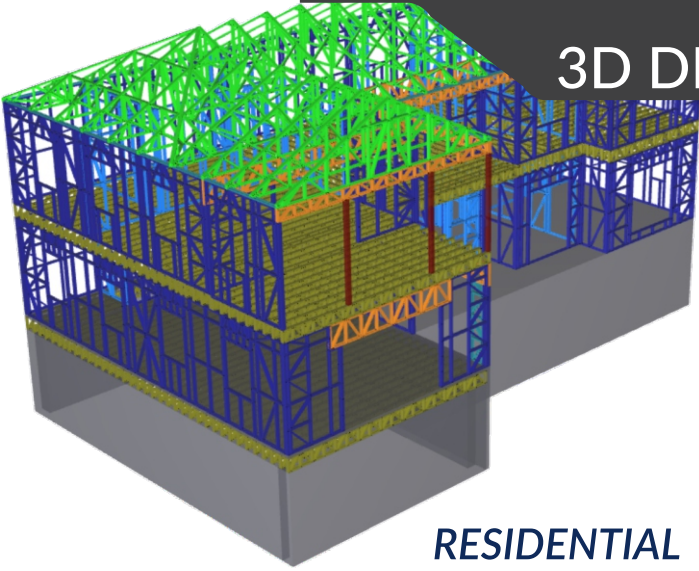


# LSF Solid Floor





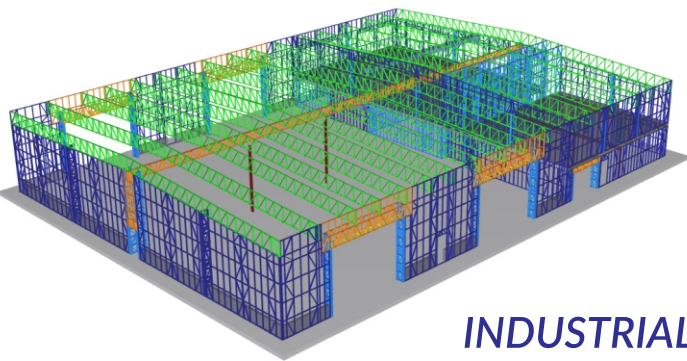
# 3D DESIGN



RESIDENTIAL



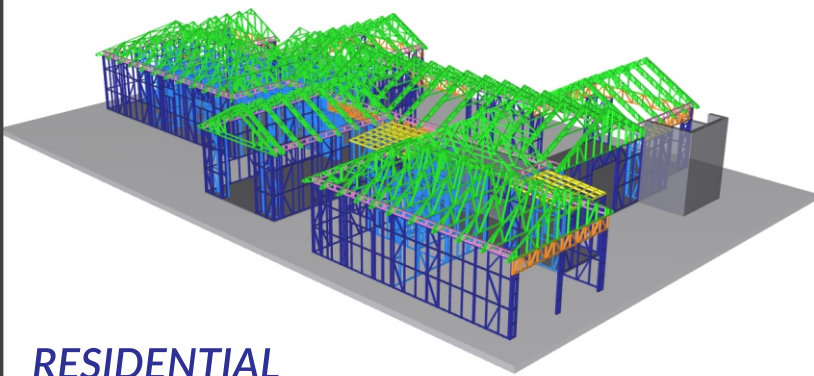
RESIDENTIAL



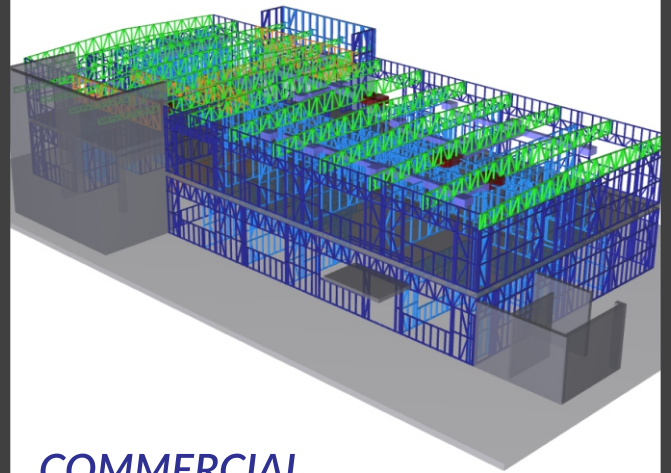
INDUSTRIAL



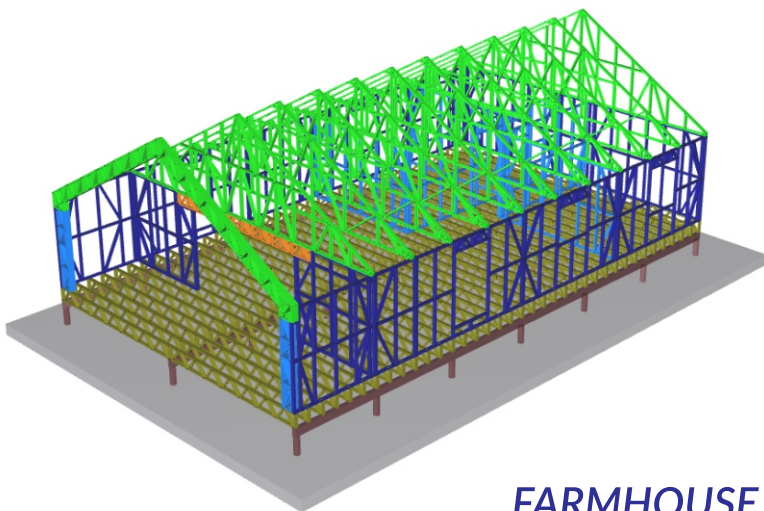
RESIDENTIAL



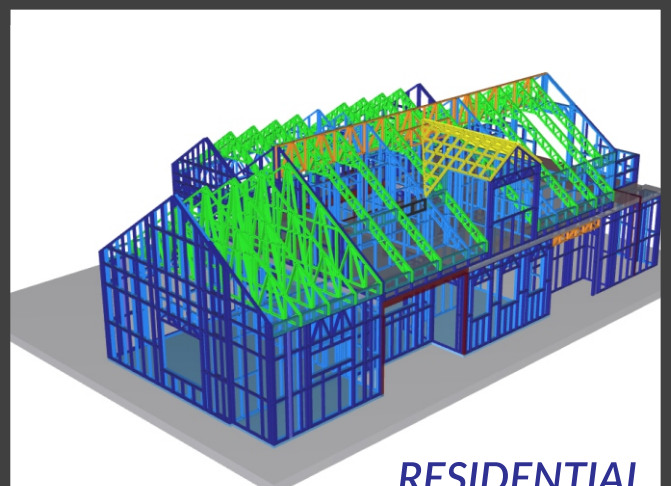
RESIDENTIAL



COMMERCIAL



FARMHOUSE

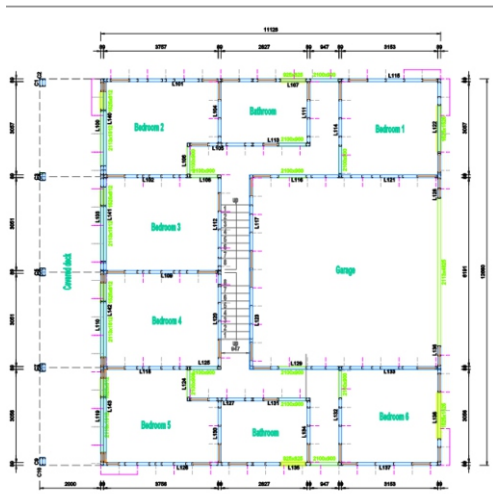


RESIDENTIAL

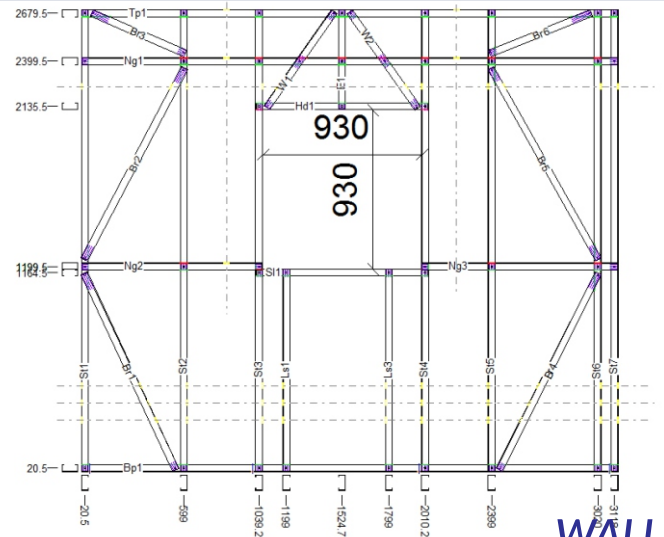


# LSF DESIGN

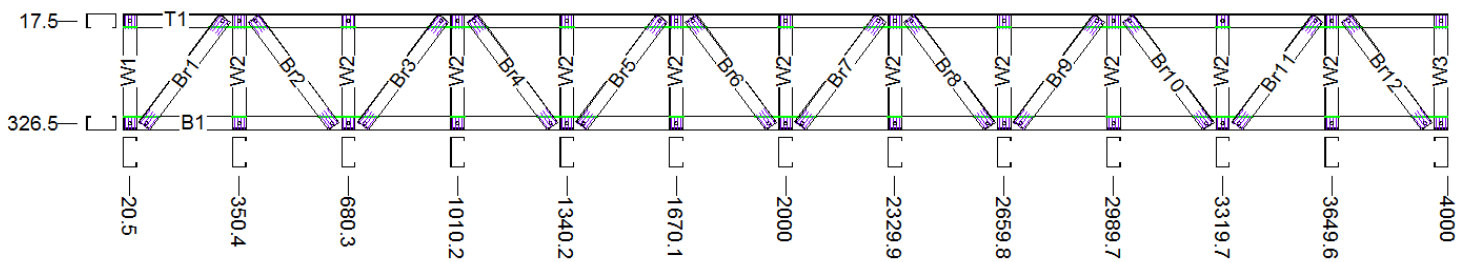
LSF CO has the ability to manufacture bespoke products or building systems suited for specific building requirements and performances. LSF CO revolves around building resolutions that are cost effective and quick to build.



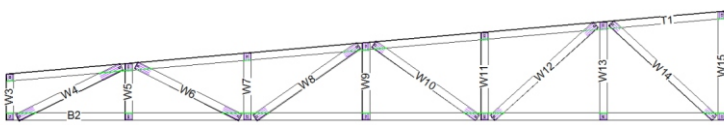
CAD LAYOUT



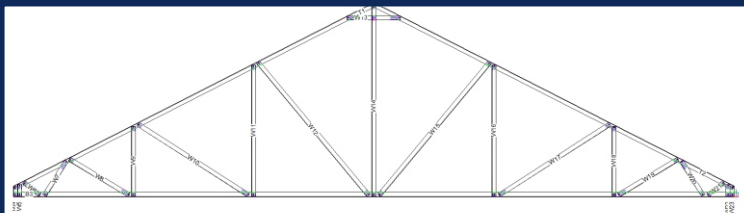
WALL



JOIST



HALF TRUSS



TRUSS





# LSF APPLICATION

The LSF CO product range is suitable for:  
Warehousing, Industrial, Residential, Commercial,  
Educational Institutions and Low Cost Housing  
Developments.



**PROJECT START**



**7 WEEKS LATER: COMPLETED PROJECT**



## CONTACT US

### MEET OUR DIRECTORS:

Marcus Lowe	marcus@lsfco.co.za	+27 81 500 7022
Mulder Kruger	mulder@lsfco.co.za	+27 82 320 1959
Etienne Terblanche	etienne@lsfco.co.za	+27 82 347 6881
Jaco Augustyn	jaco@lsfco.co.za	+27 83 656 6781

### GENERAL:

Enquiries [info@lsfco.co.za](mailto:info@lsfco.co.za)



***Our success is entirely dependent on the success of our customers.***

